

**MAGNETIC Outdoor Enclosed Menu Case 33x24 with Custom Printed Restaurant Menu Display Header | CAFE | MENU | BISTRO | TODAY'S SPECIALS**

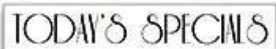
FOR CURRENT PRICING, VISIT THE ID # LISTED ABOVE  
FREE SHIPPING

Product Details



Three 8 1/2" x 11" Menus Shown

Choose from 4 Standard Headers



Or Use Your Own Custom Header



- **Magnetic Menu Display Case**
- Outdoor Restaurant Menu Case
- **Menu Case Size 33" w x 24" h (Outside Box Dimension)**
- Aluminum Menu Cabinet Construction
- **Interior Magnetic Steel Surface Panel**
- Round Magnets hold menu sheets in place
- Weather Resistant and Made for the Outdoors
- **Black Menu Box Finish**
- Display 8.5x11 11x17 8.5x14 11 x 14 Printed Restaurant Menus
- Viewable Area: 27 3/4" Wide x 11 3/4" High
- Wall Mount Cabinet
- Cabinet Features full length piano hinge
- **Security cam-lock on front of frame door (2 keys included)**
- Overall Display Cabinet Depth: 2"
- Interior Useable Depth: 5/8"
- **Includes (12) Magnets**
- Break Resistant Acrylic: Perfect for high traffic or public environments
- Withstands Typical Everyday Outside Elements - not floodproof
- Weep holes on cabinet bottom helps drain any water + any condensation
- Weather resistant aluminum backing with silicone sealant
- **For Outdoor or Indoor Applications**
- **Call for Custom Size Exterior Menu Display Cases**
- **Magnetic Menu Board 33x24 Ships Free Ground**

Header Details

- UPPERCASE Helvetica vinyl lettering
- Black lettering on a 5" white header (3" max text height)

**IMPORTANT HEADER ORDERING DETAILS**

Please type your message in the text box provided below, we will try to keep your message on one line unless otherwise specified. If we can't fit your message on one line we will center your copy on two lines. For the customer that needs a specific font, color or text positioning, you may call customer service with your requests.

**ORDERING OPTIONS BELOW.**  
**SELECT THE RIGHT OPTION FOR YOU, AND FOLLOW INSTRUCTIONS**

STANDARD HEADER (No Charge)

Standard UPPERCASE Black Helvetica Lettering as detailed above. Make sure to spell out your header in the empty **Text Box** above the Green ADD to CART button. Check your grammar & spelling!

LEAVE HEADER BLANK (No Charge)

For those customers that will be adding their own header, select this option. Make sure to enter **LEAVE BLANK** in the empty **Text Box** above the Green ADD to CART button.

CUSTOM HEADER / LOGO (Upcharge)

This is for or those customers that wish to send us a specific FONT, COLOR, or LOGO. Make sure to enter **CUSTOM LOGO** in the empty **Text Box** above the Green ADD to CART button. We will contact you once the order has been received to instruct you on how to submit the Hi-Res EPS File to us.

Ordering Options

- **Door Window: Break Resistant or Tempered Glass**
  - o Break Resistant Acrylic: 1/8" thick, lightweight (Standard)
  - o 1/4" Tempered Glass for public environments and locations that require this added safety feature. (Upcharge)
    - If chosen we will use our heavy duty door that will change one of 2 dimensions by 1/2". We will contact you if you do not indicate which dimension you would like adjusted in your order notes.
    - The viewable area can decrease by 1/2" or the overall size can be increased by 1/2".

**LED LIGHTS BRIGHTER & LONGER LASTING**

Go GREEN with our energy saving LED Lights. Interior LED Lights are positioned on the interior to SPOTLIGHT; your posters, signage,

postings, menus, and other printed announcements. LED lights are long lasting, and energy efficient. Choose from Top Lit, 2 Longer Sides, or the Entire Interior Perimeter for LED Lighting placement.

- UL approved LED Strip Lighting
- Cool White LED Lighting
- LED Life: 50,000 hours

**\*\*We provide a 3-wire cord attached to the ballast / transformer inside the display case. When installing you should use a licensed electrician / installer to bring power to the display. The installer will best decide where to exit the hardwire provided (we do not provide an exit hole as we feel its best for the installer to decide the best exit point for power supply).**

**PLEASE NOTE: when ordering LEDs the...**

**Overall Depth will switch to 3 1/8" and the Interior Depth will switch to 1 5/8"**

**We offer THREE LED Lighting Options as detailed below;**

**TOP LIGHTING (ONE SIDE)**

For this option we place an LED strip light on the top side of the interior display case. The light will shine downward onto the interior case, highlighting the contents inside.

**TWO LONGER SIDES**

For this option we place an LED strip light along the 2 longer sides of the interior display case. The light will shine from 2 sides of the interior case, bringing more highlighting to the contents inside.

**INSIDE PERIMETER (ALL 4 SIDES).**

For this option we place an LED strip light along the entire Perimeter of the interior display case. The light will shine from all 4 sides of the interior case, bringing more light intensity to the contents being displayed inside.

Model	Overall Size	Viewable Area	Ships Via
SCMMH-2433	33" Wide x 24" High x 2" Deep	27 3/4" Wide x 11 3/4" High	UPS