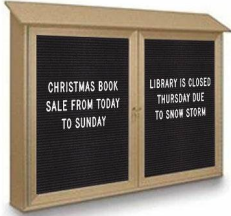


**Outdoor Message Center Letter Board 60" x 24" | Wall Double Door Enclosed Information Display Board**

FOR CURRENT PRICING, VISIT THE ID # LISTED ABOVE

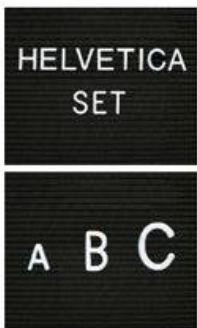
**Product Details**



PROTECTIVE ROOF SHELTER TO PROTECT YOUR MESSAGES



2" Letter Set Included



Additional Letter Sets Available  
1/2", 3/4", 1", 2" & 3"

- **Outdoor Enclosed Letter Board**
- **Wall Mount Exterior Message Center**
- **60 x 24** Letter Board Cabinet Size
- Letter Board with Changeable Letters
- Weatherproof Information Display Board
- Hinged Two Door Display Case
- Faux Wood Style Display Case
- **Two Sturdy Hinged Doors**
- **Grooved Vinyl Covered Letterboard Panel**
- Locking Letter Board Display with 2 Keys
- Heavy-duty construction for years of use
- **Eco-Friendly and Maintenance Free**
- **Faux Wood Design - Looks Like real Wood**
- **High Density Recycled Plastic (polyethylene construction)**
- **Will not rot, splinter, or crack**
- Removable interior letter board panel surface
- **LED Illuminated display cases are Optional**
- 3/4" wide main frame / 1 1/2" wide door frame
- 5 1/2" exterior depth / 3 3/4" interior depth
- 8 1/2" rain overhang cover depth
- **Call For Custom Outside Message Center Sizes**

**145 piece 2" Helvetica letter / number set included**

**Recycled Plastic (Faux Wood) Construction Benefits**

- Maintenance Free Recycled Plastic
- Will not crack or decay, split, rot or chip
- Impervious to water, chemicals, and insects
- Finished back panel looks great and adds structural integrity

**Ordering Options**

- Optional vinyl grooved letter boards
- Optional letter & character sets (1/2", 3/4", 1", 2", 3")

**Lighting Options**

**LED LIGHTS BRIGHTER & LONGER LASTING**

Go GREEN with our energy saving LED Lights. Interior LED Lights are positioned on the interior to SPOTLIGHT; your posters, signage, postings, menus, and other printed announcements. LED lights are long lasting, and energy efficient. Choose from Top Lit, 2 Longer Sides or the Entire Interior Perimeter for LED Lighting placement.

- UL approved LED Strip Lighting
- Cool White LED Lighting
- LED Life: 50,000 hours

\*\*We provide a 3-wire cord attached to the ballast / transformer inside the display case. When installing you should use a licensed electrician / installer to bring power to the display. The installer will best decide where to exit the hardwire provided (we do not provide an exit hole as we feel its best for the installer to decide the best exit point for power supply).

We offer **THREE LED Lighting Options as detailed below;**

**TOP LIGHTING (ONE SIDE)**

For this option we place an LED strip light on the top side of the interior display case. The light will shine downward onto the interior case, highlighting the contents inside.

**TWO LONGER SIDES**

For this option we place an LED strip light along the 2 longer sides of the interior display case. The light will shine from 2 sides of the interior case, bringing more highlighting to the contents inside.

**INSIDE PERIMETER (ALL 4 SIDES).**

For this option we place an LED strip light along the entire Perimeter of the interior display case. The light will shine from all 4 sides of the interior case, bringing more light intensity to the contents being displayed inside.

Model	Overall Size	Viewable Area (Per Door)	Shipping Weight	Ships Via
SD2DLB-6024	60" Wide x 24" High	24 1/2" Wide x 16" High	53 LBS	Freight