

Wall Mount 50x40 Outdoor Message Center Letter Board with Sliding Doors

FOR CURRENT PRICING, VISIT THE ID # LISTED ABOVE

Product Details



- Display important messages and protect them from the elements
- **Outdoor Letter Board Message Center 50x40**
- Great for university campuses, parks, and golf courses
- **Sliding doors roll on nylon wheels with minimal effort**
- Will not rot, splinter, or crack with the high density polyethylene construction
- Finished back panel adds structural integrity
- Removable interior surface
- Ratchet Locks included with two keys
- 3/4" wide main frame / 1 1/2" wide door frame
- 5 1/2" exterior depth / 3 3/4" interior depth
- 8 1/2" rain cover depth
- **LED Illuminated display cases are Optional**
- **Call to Customize Sliding Door Message Center Letter Boards**

5 1/2" exterior depth



- **145 piece 2" Helvetica letter / number set included**

Recycled Plastic (Faux Wood) Construction Benefits

- Maintenance Free Recycled Plastic
- Will not crack or decay, split, rot or chip
- Impervious to water, chemicals, and insects
- Finished back panel looks great and adds structural integrity



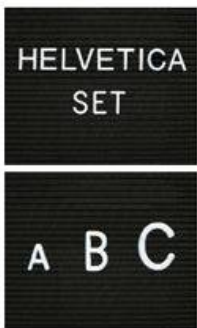
PROTECTIVE ROOF SHELTER TO PROTECT YOUR MESSAGES

Ordering Options

- Optional vinyl grooved letterboards
- Optional letter & character sets (1/2", 3/4", 1", 2", 3")

Lighting Options

2" Letter Set Included



Additional Letter Sets Available
1/2", 3/4", 1", 2" & 3"

LED LIGHTS BRIGHTER & LONGER LASTING

Go GREEN with our energy saving LED Lights. Interior LED Lights are positioned on the interior to SPOTLIGHT; your posters, signage, postings, menus, and other printed announcements. LED lights are long lasting, and energy efficient. Choose from **Top Lit**, **2 Longer Sides**, or the **Entire Interior Perimeter** for LED Lighting placement.

- UL approved LED Strip Lighting
- Cool White LED Lighting
- LED Life: 50,000 hours

**We provide a 3-wire cord attached to the ballast / transformer inside the display case. When installing you should use a licensed electrician / installer to bring power to the display. The installer will best decide where to exit the hardwire provided (we do not provide an exit hole as we feel its best for the installer to decide the best exit point for power supply).

We offer **THREE LED Lighting Options** as detailed below;

TOP LIGHTING (ONE SIDE)

For this option we place an LED strip light on the top side of the interior display case. The light will shine downward onto the interior case, highlighting the contents inside.

TWO LONGER SIDES

For this option we place an LED strip light along the 2 longer sides of the interior display case. The light will shine from 2 sides of the interior case, bringing more highlighting to the contents inside.

INSIDE PERIMETER (ALL 4 SIDES)

For this option we place an LED strip light along the entire Perimeter of the interior display case. The light will shine from all 4 sides of the interior case, bringing more light intensity to the contents being displayed inside.

Model	Overall Size	Product Weight	Ships Via
-------	--------------	----------------	-----------

SDMCLB-5040

50" Wide x 40" High

85 LBS

Freight