

Outdoor Message Center Letter Board 38" x 54" | LEFT Hinged - Single Door, Wall Mount Info Board

FOR CURRENT PRICING, VISIT THE ID # LISTED ABOVE

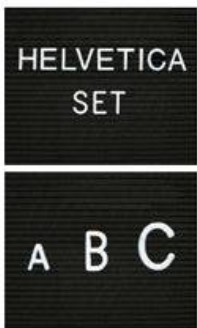
Product Details



BACK VIEW



2" Letter Set Included



Additional Letter Sets Available
1/2", 3/4", 1", 2" & 3"

- **Wall Mount Outdoor Letter Board Message Center**
- **Enclosed Letter Board with Changeable Letters**
- **38" Wide x 54" High** Message Display Cabinet Overall Size
- Weather Resistant Information Board
- **Faux Wood Style Display Case**
- **Single LEFT Hinged Door**
- **Grooved Letter Board**
- Locking Letter Board Display
- Front Frame Right Side Lock, 2 Keys Included
- Heavy-duty construction for years of use
- Withstands typical everyday outside elements
- Cabinet Weep Holes helps expel any water + dissipates condensation
- Eco-Friendly and Maintenance Free
- Faux Wood Design - Looks Like real Wood
- High Density Recycled Plastic (polyethylene construction)
- Will not rot, splinter, or crack
- **Removable interior letter board surface**
- 3/4" wide main frame / 1 1/2" wide door frame
- 5 1/2" exterior depth / 3 3/4" interior depth
- 8 1/2" rain overhang cover depth
- **LED Illuminated Message Center Available as an Option**
- **Call For Custom Outside Message Center Sizes**

145 piece 2" Helvetica letter / number set included

Recycled Plastic (Faux Wood) Construction Benefits

- Maintenance Free Recycled Plastic
- Will not crack or decay, split, rot or chip
- Impervious to water, chemicals, and insects
- Finished back panel looks great and adds structural integrity

Ordering Options

- Optional vinyl grooved letterboards
- Optional letter & character sets (1/2", 3/4", 1", 2", 3")

Lighting Options

LED LIGHTS - BRIGHTER & LONGER LASTING

Go GREEN with our energy saving LED Lights. Interior LED Lights are positioned on the interior to spotlight a wide range of information, including times, dates, menus, and other announcements. LED lights are long lasting, and energy efficient. Choose from Top Lit or Entire Interior Perimeter for LED Lighting placement.

- UL approved LED Strip Lighting
- Cool White LED Lighting
- LED Life: 50,000 hours

**We provide a 3-wire cord attached to the ballast / transformer inside the display case. When installing you should use a licensed electrician / installer to bring power to the display. The installer will best decide where to exit the hardwire provided (we do not provide an exit hole as we feel it is best for the installer to decide the best exit point for power supply).

We offer **TWO** LED Lighting Options as detailed below:

TOP LIGHTING (ONE SIDE)

For this option we place an LED strip light on the top side of the interior display case. The light will shine downward onto the interior case, highlighting the contents inside.

INSIDE PERIMETER (ALL 4 SIDES)

For this option we place an LED strip light along the entire Perimeter of the interior display case. The light will shine from all 4 sides of the interior case, bringing more light intensity to the contents being displayed inside.

Model	Overall Size	Viewable Area	Orientation / Hinge Location	Shipping Weight
-------	--------------	---------------	------------------------------	-----------------

SIDMCLB-3854	38" Wide x 54" High	31 1/4" Wide x 45 3/4" High	Portrait / LEFT Hinged	102 LBS
--------------	---------------------	-----------------------------	------------------------	---------