

Outdoor Enclosed Bulletin Board Display Case 22 x 28 | All-Weather Metal Cabinet, Front Locking Door

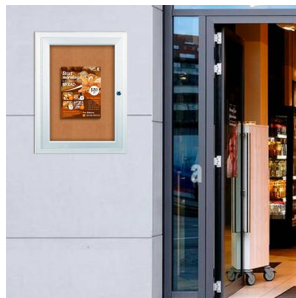
FOR CURRENT PRICING, VISIT THE ID # LISTED ABOVE

Product Details

- Wall Outdoor Bulletin Board Display Case
- Enclosed 22" x 28" Bulletin Board Cabinet
- Durable Aluminum Case Construction
- Weather Resistant Cabinet with Single Door
- Full-length piano hinge (opens right to left)
- 22 x 28 Display Case
- Wall Mount Display Board
- Security Cam-Lock on front of 22x28 Cabinet (2 keys included)
- Outer Cabinet Dimension Approx 5" Larger than Viewing Area
- Overall Bulletin Board Display Case Depth: 2"
- Interior Useable display case Depth: 5/8"
- Break-Resistant Clear Acrylic Window
- 4 outdoor treated metal cabinet finishes
- Natural tan cork board interior
- Withstands typical everyday elements - Not water or floodproof
- **Cabinet Weep Holes** help drain any water + reduce condensation buildup
- Weather-resistant aluminum backing with silicone sealant
- Enclosed 22x28 Cork Board Case For **Outdoor & Indoor Use**
- 22" x 28" Display Case must be surface mounted on the wall
- Call for Custom Bulletin Board Display Cases

Ordering Options

- Frame Orientation: Portrait or Landscape
- Vinyl covering over cork
- **Door Window: Break Resistant or Tempered Glass**
 - Break Resistant Acrylic: 1/8" thick, lightweight (Standard)
 - 1/4" Tempered Glass for public environments and locations that require this added safety feature. (Upcharge)
 - If chosen we will use our heavy duty door that will change one of 2 dimensions by 1/2". We will contact you if you do not indicate which dimension you would like adjusted in your order notes.
 - The viewable area can decrease by 1/2" or the overall size can be increased by 1/2".



Model	Interior Size	Viewable Area	Overall Size (Portrait)	Overall Size (Landscape)	Ships Via	Shipping Weight
SCBB-2228	23 1/4" x 29 3/4"	22" x 28"	27 1/4" x 33"	33 1/4" x 27"	UPS	26