

### ECO-Design 12x20 Outdoor Wall Mount Slender Information Letter Boards - Portrait

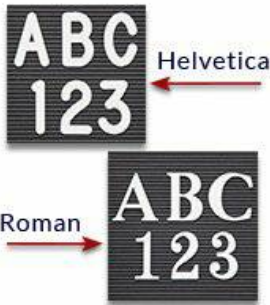
FOR CURRENT PRICING, VISIT THE ID # LISTED ABOVE

#### Product Details



- EcoDesign Wall Mount Information Center
- Portrait - Outdoor Letter Board Message Center
- Viewing Area: 12.5" Wide x 20.5" High
- Overall Size: 23.5" Wide x 5.5" Deep x 30" High
- Eco-Friendly Recycled Plastic Construction
- Faux Wood Style: Looks like Real Wood
- Six Faux Wood Finishes
- Locking Display Case with Two Keys Included
- 3/4" White Plastic Letters Set with 435 Characters
- Single Door - LEFT HINGED
- Stainless Steel Door Hinges
- UV-Resistant non-yellowing, break resistant acrylic window
- Vinyl backing with grooves for quick and easy letter placement
- Eco-Friendly, Maintenance Free
- Constructed from high density Recycled Plastic (Polyethylene) Lumber
- Will Not Rot, Splinter or Crack
- Weather Resistant Exterior Cabinet: Not flood or water proof
- Finished back panel adds structural integrity
- Protective Slanted Top Roof Shield
- LED Illuminated display cases are Optional
- Call For Outdoor Custom Message Center Sizes Standing or Wall Mount

#### Variety of Letter Set Options to Choose From



5 Different Sizes:  
1/2", 3/4", 1", 2", & 3"

#### Recycled Plastic Construction Benefits

- Maintenance Free Recycled Plastic.
- Eliminate yearly maintenance with high-quality recycled plastic outdoor display boards - no painting or replacing rotting boards.
- Will not crack or decay, split, peel, rot or chip
- Rustproof and graffiti resistant
- Impervious to water, chemicals, and insects
- Finished back panel looks great and adds structural integrity

#### Lighting Options

#### LED LIGHTS BRIGHTER & LONGER LASTING

Go GREEN with our energy saving LED Lights. Interior LED Lights are positioned on the interior to SPOTLIGHT your posters, signage, postings, menus, and other printed announcements. LED lights are long lasting, and energy efficient.

#### INSIDE PERIMETER (ALL 4 SIDES)

For this option we install LED strip lighting along the entire Perimeter of the interior message center. The light will shine from all 4 sides of the interior case, bringing more light intensity to the contents being displayed inside.

- Pre-cut 1/2" dia. LED light roping is factory-installed
- Pre-assembled SJT (Heavy-duty) power cord with rectifier & 2-prong polarized plug requires a power source
- Power cord exits out the bottom of the message center
- 1" vertical LED bulb spacing
- Temperature Rating: -60°F - 200°F
- Light Color: Warm white
- Brightness: 6500
- Dimmable
- 100,000 hours of burn time
- Energy efficient - only consumes 0.8 watts per foot
- 120 volts (No transformer required)
- Indoor/ outdoor use.

#### Ordering Options

- Optional letter & character sets (1/2", 3/4" 1", 2", 3")

Model	Overall Size	Viewable Area	Orientation / Hinge Location	Shipping Weight (With Posts)
EDK-147	23.5" w x 5.5" d x 30" h	12.5" w x 20.5" h	Portrait / LEFT Hinged	33 LBS