

8.5x11 Changeable Letter Board Upscale Hospitality Satin Aluminum Wall Displays

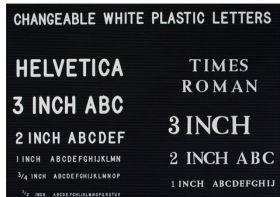
FOR CURRENT PRICING, VISIT THE ID # LISTED ABOVE

Product Details

- **Elegant Hospitality Frame Letter Board**
- **Heavy-Duty, Upscale Message Display**
- Letter Board with Changeable Letters
- **Open Face Frame - No Acrylic Overlay**
- Open Face Allows Easily Change of your Message
- 8.5x11 Letter Board Size
- **Black Vinyl Grooved Letter Board Panel**
- **Frame Size 8 1/2" x 11"**
- **Frame Top opening with "Lift-Top" Feature**
- Tamper-Proof concealed sign track design
- All Aluminum rustproof construction
- Made from recycled durable aluminum
- Frame corners are meticulously and permanently joined together
- Includes 3/4" White Helvetica Plastic Letters Sprue Set
- **Made in America**
- **8.5x11 Hospitality Letter Board Wall Display** Ideal for Restaurants, Hotels
- Open Face 8 1/2 x 11 Letterboard Frames Designed **for Indoor Use**

Ordering Options

- Frame Orientation: Portrait or Landscape
- Optional letter & character sets (1/2", 3/4", 1", 2", 3")



Model	Letterboard Size	Viewable Area	Weight	Ships Via
GLW33	8 1/2" x 11"	7 1/4" x 9 3/4"	3 LBS	UPS