

12x18 Changeable Letter Board Upscale Hospitality Satin Aluminum Wall Displays

FOR CURRENT PRICING, VISIT THE ID # LISTED ABOVE

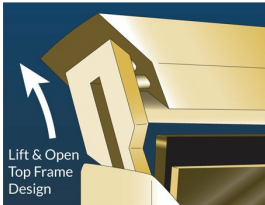
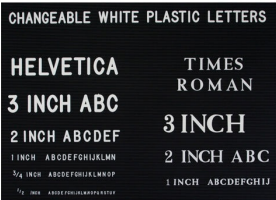
Product Details



- Elegant Hospitality Frame Letter Board
- Heavy-Duty, Upscale Message Display
- Letter Board with Changeable Letters
- **Open Face Frame - No Acrylic Overlay**
- Open Face Allows Easily Change of your Message
- 12x18 Letter Board Size
- **Black Vinyl Grooved Letter Board Panel**
- **Frame Size 12" x 18"**
- **Frame Top opening with "Lift-Top" Feature**
- Tamper-Proof concealed sign track design
- All Aluminum rustproof construction
- Made from recycled durable aluminum
- Frame corners are meticulously and permanently joined together
- Includes 3/4" White Helvetica Plastic Letters Sprue Set
- **Made in America**
- **12x18 Hospitality Letter Board Wall Display** Ideal for Restaurants, Hotels
- Open Face 12 x 18 Letterboard Frames Designed **for Indoor Use**

Ordering Options

- Frame Orientation: Portrait or Landscape
- Optional letter & character sets (1/2", 3/4", 1", 2", 3")



Model	Letterboard Size	Viewable Area	Weight	Ships Via
GLW36	12" x 18"	10 3/4" x 16 3/4"	4 LBS	UPS