

### Open Face Wood Framed Shadow Box 3" Deep with Adjustable Glass Shelves

FOR CURRENT PRICING, VISIT THE ID # LISTED ABOVE

#### Product Details

- Shadow Box with Shelves
- **OPEN FACE - NO Window or Door**
- **Wood Framed Shadow Box Display Case**
- **3" Deep Shadow Box Interior**
- **Glass Shelves**
- Shelves are Adjustable
- Wall Mount Shadow Box
- Flanged Wood Frame Shadow Box Display Case
- **#362 Wood Shadow Frame Profile: 1 3/4" Wide**
- **Usable Interior Wood Shadow Box Depth: 3"**
- Overall Depth Shadow Box Depth: 4 1/2"
- **9 Natural wood shadowbox frame finishes**
- Exterior Box Sides: Finished with a complimentary laminate to frame
- Interior Backing Board: 1/2" White or Black Melamine | or Complimentary Laminate
- Shelf holes are aligned on the the interior sides for shelf height adjustment
- Installs Easily: Wall mounting hardware included
- **3" Deep Designer Open Shadow Boxes with Shelves For Indoor Use Only**
- Call to Customize Open Face Wood Framed Wall Shadow Box + Shelves

#### Glass Shelf Supports Information

##### Metal Shelf Support Clips ()

- Shadowboxes with an interior size of 48" or less, receive metal support clips
- Shelf holes are aligned on the interior sides for shelf height adjustment
- Shelf holes are spaced out 2 1/2" apart down the interior sides
- (4) shelf clips per shelf are included (sized to fit the pre-drilled shelf holes)

##### Shelf Support Standards ()

For all shelves wider than 48", we would install Metal Shelf Standards onto the back of the shadowbox for added support.

\* If you would like to add Standard Supports to your display case for any size small or large, please contact customer service to help assist you.

#### Shelf Options

##### Number of Glass Shelves (Order up to 6 for your Display Case)

- Choose between 1, 2, 3, 4, 5 or 6 shelves for your shadowbox display
- Additional shelves or replacement shelves are available upon request

##### Annealed Glass Shelves (1/4" Thick)

- Most display cases sold come standard with 1/4" thick plate glass
- 1/4" thick plate glass with buffed edges is ideal for lightweight items

##### Annealed Glass Shelves (3/8" Thick)

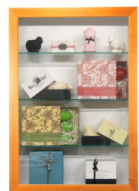
- 3/8" thick glass with buffed edges provide an elegant sturdy shelf
- The 3/8" thickness is perfect for heavier items being placed inside the display case while presenting an impressive look for your interior environment
- **\*3/8" thick glass is recommended for shelves wider than 36"**

IF YOU'RE INTERESTED IN TEMPERED GLASS SHELVES, PLEASE CONTACT CUSTOMER SERVICE FOR A QUOTE!

#### Ordering Options

- Frame Orientation: Portrait or Landscape
- Interior Box Finish: White or Black Melamine | or Complimentary Laminate

CALL FOR LED LIGHTING OPTIONS and PRICING!



1 3/4" WIDE FRAME PROFILE

**Open Face Shadowbox with Shelves Custom Options Include:**Custom shadow box sizes, custom shadow box frames, deep shadow box sizes, lit shadow boxes, cork board backer, fabric backer, and additional shelves **(Call for Details)**

Model	Interior Dimensions	Overall Size (Flanged Frame)	Orientation	Ships Via	Weight
SBWSHELF3-OPEN-1620	16" x 20" x 3"	19 1/4" x 23 1/4" x 4 1/2"	Portrait or Landscape	FedEx	31 LBS
SBWSHELF3-OPEN-1824	18" x 24" x 3"	21 1/4" x 27 1/4" x 4 1/2"	Portrait or Landscape	FedEx	36 LBS
SBWSHELF3-OPEN-2024	20" x 24" x 3"	23 1/4" x 27 1/4" x 4 1/2"	Portrait or Landscape	FedEx	37 LBS
SBWSHELF3-OPEN-2030	20" x 30" x 3"	23 1/4" x 33 1/4" x 4 1/2"	Portrait or Landscape	FedEx	41 LBS
SBWSHELF3-OPEN-2228	22" x 28" x 3"	25 1/4" x 31 1/4" x 4 5/8"	Portrait or Landscape	FedEx	41 LBS
SBWSHELF3-OPEN-2424	24" x 24" x 3"	27 1/4" x 27 1/4" x 4 1/2"	Square	FedEx	40 LBS
SBWSHELF3-OPEN-2436	24" x 36" x 3"	27 1/4" x 39 1/4" x 4 1/2"	Portrait or Landscape	FedEx	50 LBS
SBWSHELF3-OPEN-2448	24" x 48" x 3"	27 1/4" x 51 1/4" x 4 1/2"	Portrait or Landscape	FedEx	60 LBS
SBWSHELF3-OPEN-2460	24" x 60" x 3"	27 1/4" x 63 1/4" x 4 1/2"	Portrait or Landscape	Freight	70 LBS
SBWSHELF3-OPEN-2472	24" x 72" x 3"	27 1/4" x 75 1/4" x 4 1/2"	Portrait	Freight	80 LBS
SBWSHELF3-OPEN-2484	24" x 84" x 3"	27 1/4" x 87 1/4" x 4 1/2"	Portrait	Freight	N/A
SBWSHELF3-OPEN-OD2496	20 3/4" x 92 3/4" x 3"	24" x 96" x 4 1/2"	Portrait	Freight	N/A
SBWSHELF3-OPEN-3030	30" x 30" x 3"	33 1/4" x 33 1/4" x 4 1/2"	Square	FedEx	38 LBS
SBWSHELF3-OPEN-3040	30" x 40" x 3"	33 1/4" x 43 1/4" x 4 1/2"	Portrait or Landscape	FedEx	40 LBS
SBWSHELF3-OPEN-3636	36" x 36" x 3"	39 1/4" x 39 1/4" x 4 1/2"	Square	FedEx	40 LBS
SBWSHELF3-OPEN-3648	36" x 48" x 3"	39 1/4" x 51 1/4" x 4 1/2"	Portrait or Landscape	Freight	60 LBS
SBWSHELF3-OPEN-3660	36" x 60" x 3"	39 1/4" x 63 1/4" x 4 1/2"	Portrait or Landscape	Freight	N/A
SBWSHELF3-OPEN-3672	36" x 72" x 3"	39 1/4" x 75 1/4" x 4 1/2"	Portrait	Freight	N/A
SBWSHELF3-OPEN-3684	36" x 84" x 3"	39 1/4" x 87 1/4" x 4 1/2"	Portrait	Freight	N/A
SBWSHELF3-OPEN-OD3696	32 3/4" x 92 3/4" x 3"	36" x 96" x 4 1/2"	Portrait	Freight	N/A
SBWSHELF3-OPEN-4060	40" x 60" x 3"	43 1/4" x 63 1/4" x 4 1/2"	Portrait or Landscape	Freight	N/A
SBWSHELF3-OPEN-OD-4848	44 3/4" x 44 3/4" x 3"	48" x 48" x 4 1/2"	Square	Freight	N/A
SBWSHELF3-OPEN-OD-4860	44 3/4" x 56 3/4" x 3"	48" x 60" x 4 1/2"	Portrait	Freight	N/A
SBWSHELF3-OPEN-OD-4872	44 3/4" x 68 3/4" x 3"	48" x 72" x 4 1/2"	Portrait	Freight	N/A
SBWSHELF3-OPEN-OD-4884	44 3/4" x 80 3/4" x 3"	48" x 84" x 4 1/2"	Portrait	Freight	N/A
SBWSHELF3-OPEN-OD-4896	44 3/4" x 92 3/4" x 3"	48" x 96" x 4 1/2"	Portrait	Freight	N/A