

Enclosed 2-Door INDOOR Combo Board 72x30 | Changeable FELT Letter Board & Dry Erase Marker Board

FOR CURRENT PRICING, VISIT THE ID # LISTED ABOVE

Product Details

- Indoor Combination Display Boards
- Enclosed Combo Message Board 72x30
- White or Black Marker Board / Letter Board Combo
- Wall Mount, 2 Door Display Case
- Durable Aluminum Construction
- Overall Combo Board Display Case Size: 72" Wide x 30" High
- Combo Boards Divided into Two Panels
- **PANEL # 1: Magnetic Porcelain Dry Erase Marker Board**
- **PANEL # 2: Felt Letterboard**
- YOU CHOOSE which side the display board surface is positioned
- Letter Board: 1/4" spaced grooves for easy letter and number insertion
- 3/4" White Helvetica letters / numbers included (290 Character Sprue Set)
- Locking Message Board Display Case
- Security cam-lock on the front of each door (2 keys included)
- Features full length piano hinges to support each door
- **Frame Orientation: Landscape**
- Optional Interior LED Lights
- Overall Enclosed Combo Board Exterior Case Depth: 2"
- Interior Useable Depth: 5/8"
- Break Resistant Acrylic Window: Ideal for high traffic public environments
- **FREE SHIPPING ON 72 x 30 Indoor Message Combo Boards 2 Door**

LOOKING FOR A CUSTOM ENCLOSED COMBO BOARD SIZE?
or NEED 3 DOORS with 3 PANELS?...

CALL US FOR A QUOTE at

Panel Ordering Options

Dry/Wet Erase Board Removable Panel Ordering Options

- Dry/Wet Erase Display Board Colors:
Available in White or Black
- Standard Marker Set (4 Colors):
Wipes off Easily (Black, Blue, Green, Red)
- Fluorescent Marker Set (5 Colors):
Wipes off Easily (Yellow, Pink, Blue, Green, White)
- Dry Eraser & Spray Cleaner Combo:
Soft pile, the eraser collects dust and marker residue.
The pump spray cleaner removes ghosting, grease, dirt,
and stains with a clean dry cloth

Felt Letter Board Panel Ordering Options

- Optional colors for felt letter board panel
- Optional letter & character sets (1/2", 3/4", 1", 2", 3")

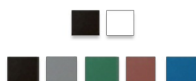
3/4" Sprue Set with white Helvetica letters and numbers included (290 Characters)

***CUSTOM SIZES AVAILABLE | CALL US**

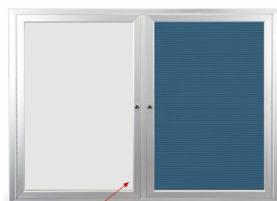
Ordering Options

Door Window: Break Resistant or Tempered Glass

- Break Resistant Acrylic: 1/8" thick, lightweight (Standard)
- 1/4" Tempered Glass for public environments and locations that require this added safety feature. (Upcharge)
 - If chosen we will use our heavy duty door that will change one of 2 dimensions by 1/2". We will contact you if you do not indicate which dimension you would like adjusted in your order notes.
 - The viewable area can decrease by 1/2" or the overall size can be increased by 1/2".



YOU CAN CHOOSE EXACTLY HOW YOU WANT
YOUR COMBO BOARD TO LOOK!



1 7/16" Wide Silver Door Frame

Lighting Options

LED LIGHTS BRIGHTER & LONGER LASTING

Go GREEN with our energy saving LED Lights. Interior LED Lights are positioned on the interior to SPOTLIGHT; your posters, signage, postings, menus, and other printed announcements. LED lights are long lasting, and energy efficient. Choose from Top Lit, 2 Longer Sides or the Entire Interior Perimeter for LED Lighting placement.

- UL approved LED Strip Lighting
- Cool White LED Lighting
- LED Life: 50,000 hours

****We provide a 3-wire cord attached to the ballast / transformer inside the display case. When installing you should use a licensed electrician / installer to bring power to the display. The installer will best decide where to exit the hardwire provided (we do not provide an exit hole as we feel its best for the installer to decide the best exit point for power supply).**

PLEASE NOTE: When LED lighting is chosen, overall depth of display case will become 3 1/8" (with an interior depth 1 5/8") to allow for necessary space for the power supply.

We offer THREE LED Lighting Options as detailed below;

TOP LIGHTING (ONE SIDE)

For this option we place an LED strip light on the top side of the interior display case. The light will shine downward onto the interior case, highlighting the contents inside.

TWO LONGER SIDES

For this option we place an LED strip light along the 2 longer sides of the interior display case. The light will shine from 2 sides of the interior case, bringing more highlighting to the contents inside.

INSIDE PERIMETER (ALL 4 SIDES)

For this option we place an LED strip light along the entire Perimeter of the interior display case. The light will shine from all 4 sides of the interior case, bringing more light intensity to the contents being displayed inside.

Model	Overall Size	Orientation	Viewable Area (per door)	Number of Doors	Shipping Weight
CBIELM-7230	72" Wide x 30" High	Landscape	31 1/4 Wide" x 25" High	2	50 LBS