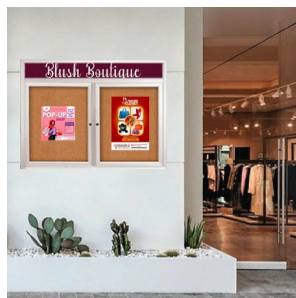


### Enclosed Outdoor Bulletin Boards 48 x 36 with Message Header and Radius Edge (2 DOORS)

FOR CURRENT PRICING, VISIT THE ID # LISTED ABOVE

#### Product Details



- Outdoor Bulletin Board
- Header Panel - With Your Message
- Wall Mount Display Case
- Aluminum Cabinet Construction with Radius Edges
- Overall Size: 48" Wide x 36" High
- Number of Doors: 2
- Sleek radius frame accentuates messages
- Features full length piano hinges support each door
- Lockable Bulletin Board
- Security cam-lock is on the front of each door (2 keys included)
- Overall Depth: 2"
- Interior Useable Depth: 5/8"
- Frame Orientation: 48x36 come standard in **LANDSCAPE** orientation
- 4 outdoor treated frame finishes
- Break Resistant Acrylic: Perfect for public environments
- Self sealing natural cork interior
- Weep holes provided on bottom of cabinet to reduce condensation
- Weather resistant aluminum backing with silicone sealant
- 48x36 Corkboard Display Case must be **surface mounted** on wall
- **Free Shipping** on 2 Door Outdoor Bulletin Boards with Header
- **Call for Custom Enclosed Cork Board Sizes**

#### Header Details

UPPERCASE Helvetica vinyl lettering  
- Black lettering on a 5" white header (3" max text height)

#### IMPORTANT HEADER ORDERING DETAILS

Please type your message in the text box provided below, we will try to keep your message on one line unless otherwise specified. If we can't fit your message on one line we will center your copy on two lines. For the customer that needs a specific font, color or text positioning, you may call customer service with your requests.

#### SELECT THE RIGHT OPTION FOR YOU, AND FOLLOW INSTRUCTIONS

##### STANDARD HEADER (No Charge)

Standard UPPERCASE Black Helvetica Lettering as detailed above. Make sure to spell out your header in the empty **Text Box** above the Green ADD to CART button. Check your grammar & spelling!

##### LEAVE HEADER BLANK (No Charge)

For those customers that will be adding their own header, select this option. Make sure to enter **LEAVE BLANK** in the empty **Text Box** above the Green ADD to CART button.

##### CUSTOM HEADER / LOGO (Upcharge)

This is for or those customers that wish to send us a specific FONT, COLOR, or LOGO. Make sure to enter **CUSTOM LOGO** in the empty **Text Box** above the Green ADD to CART button. We will contact you once the order has been received to instruct you on how to submit the Hi-Res EPS File to us.

#### Ordering Options

- Painted Cork and Fabric Colors over Cork
- Plastic Clear or Multi-Color Push Pins (100 per box)
- **Door Window: Break Resistant or Tempered Glass**
  - Break Resistant Acrylic: 1/8" thick, lightweight (Standard)
  - 1/4" Tempered Glass for public environments and locations that require this added safety feature. (Upcharge)
    - If chosen we will use our heavy duty door that will change one of 2 dimensions by 1/2". We will contact you if you do not indicate which dimension you would like adjusted in your order notes.
    - The viewable area can decrease by 1/2" or the overall size can be increased by 1/2".

Model	Overall Size	Viewable Area (per door)	Number of Doors	Ships Via	Weight
SCBBRH234-4836	48" Wide x 36" High	19 1/4" x 24 1/2"	2	Freight	42 LBS