

Wide-Wood 20" x 24" Enclosed Bulletin Board SwingFrames

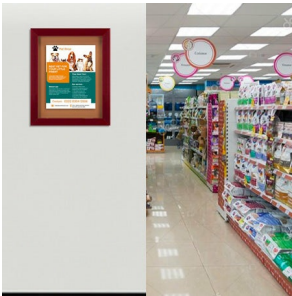
FOR CURRENT PRICING, VISIT THE ID # LISTED ABOVE

Product Details

- Enclosed 20 x 24 Bulletin Board
- Patented swing-open frame system (opens right to left)
- Features Concealed Hinges and Gravity Lock which provide a clean design
- Wood Frame Profile: 2 3/4" Wide
- Overall Depth: 2 1/4"
- Interior Useable Depth: 3/4"
- (7) popular wood finishes available
- Break Resistant Acrylic: Perfect for high traffic or public environments
- 1/4" natural cork mounted on 1/4" hardboard
- Installs Easily: Mounting hardware included
- Wide-Wood 20" x 24" Enclosed Cork Boards are for **INDOOR USE ONLY**
- [Call to Buy Custom Bulletin Board 20 x 24 Wide-Wood Swingframes](#)

Ordering Options

- Frame Orientation: Portrait or Landscape
- Fabric Covered 20" x 24" Bulletin Boards
- Lockable 20x24 Bulletin Boards with Side Plunge Lock & Key



Model	Interior Size	Overall Size	Viewable Area	Ships Via	Shipping Weight
SFWBWIDE-2024	20" x 24"	24 7/8" x 28 7/8"	19 1/8" x 23 1/8"	FedEx	18