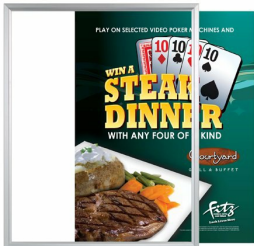


Extra Large 48x48 Frame Beveled Slide in Poster Frame, Sign Frame

FOR CURRENT PRICING, VISIT THE ID # LISTED ABOVE  
FREE SHIPPING



Product Details

- 48 x 48 Frame for Posters
- Extra Large Beveled Slide-In Frame
- Wall Hugging Sign Holder and Poster Frame
- Choose Top or Side Loading Graphic Changes
- Accepts 48x48 poster and sign size
- Quick-Change Frame 48x48
- Easy Slide-In Sign Frame Design
- Beveled Metal Frame Profile: 7/8" Wide
- Narrow frame design has 5/8" overall off the wall depth
- Slot Opening: 1/4" (max insert thickness)
- Frame size is slightly larger than the 48x48 poster inserts
- Viewable Area: Moulding overlaps poster insert by 5/16" all around
- 2 Aluminum Frame Finishes: Satin Silver, Black
- Extra Large Frames Mounts Portrait or Landscape
- Wall Mount: Punched holes in frame for easy surface mounting
- Hanging hardware screws included
- XL Top Load display frames 48 x 48 for INDOOR or OUTDOOR use
- Call for Custom Size Quick Change Poster Display and Sign Frames

**\*\*Make sure you laminate your insert material if going outdoors**  
**\*\*Top Load Sign Frames are weather resistant. Not waterproof**

Ships Unassembled

- ALL frame sizes are cut to size, and prepped for easy assembly
- Takes minutes to assemble, Corner Key and Mounting Hardware Included
- Optional Backing Board is rolled up and placed into box for shipping cost savings
- Optional Clear Overlay is rolled up and placed into box for shipping cost savings

- ALL frame rail sizes 70" and larger will be **CUT in HALF** and

provided with a Straight Joiner Key to connect the two frame rails together. This will create a seam in your frame rail

The main reason for creating the seam is to reduce shipping costs.  
We will ship these straight & mitered frame rails via common carrier ground service.

- We will ship any Length up to 148" in **FULL LENGTH** via Freight Carrier.

Please call us for your oversized slide-in frame dimensions to provide frame & freight costs

**For Detailed Instructions on How to Assemble click on the Instruction Sheet ICON up above.**

Ordering Options

Backing Board (.040" thickness)

- Black styrene, provides rigidity to your poster (this is recommended if your poster is not mounted).
- Thin enough to roll up and ship with unassembled frame.

Clear Overlay (.020 Thickness)

- Strong lightweight PETG provides a clear viewing window
- Thin enough to roll up and ship with unassembled frame.

**IF YOU WANT A THICKER, MORE RIGID ACRYLIC, WE OFFER (3) OPTIONS LISTED BELOW...**

.040 CLEAR ACRYLIC

.080 NON-GLARE ACRYLIC

.060 BREAK RESISTANT ACRYLIC

THESE FRAMES WOULD SHIP FULLY ASSEMBLED.  
FOR ACRYLIC PRICING AND SHIPPING COSTS,  
PLEASE CALL US **at**

Customize Your Sign Frame

- Call to customize Extra Large 48 x 48 Poster Snap Frames!
- If you request a Large Frame to be FULLY ASSEMBLED,

please call for a shipping quote.

- Call us to quote out frames sizes up to 144" x 144" (12 FEET x 12 FEET)

**FRAME DETAILS for SHIPPING UNASSEMBLED**

- **FREE GROUND SHIPPING!**
- Approximately 5 minutes to assemble

\*BOTH THE BACKER BOARD AND CLEAR OVERLAY  
ARE THIN ENOUGH TO ROLL UP AND  
SHIP IN A THIN BOX ALONG WITH THE FRAME.

\*WHEN FRAMES ARE SHIPPED UNASSEMBLED, WE RECOMMEND A  
SLIGHTLY **THICKER (MOUNTED) POSTER INSERT 1/8 - 3/16"**. THIS  
ADDED THICKNESS WILL HELP SUPPORT THE POSTER IN THE FRAME.

Model	Insert Size	Overall Size	Viewable Area	Ships Via	Shipping Weight
TLBSXL-4848	48" x 48"	49 1/8" x 49 1/8"	47 1/2" x 47 1/2"	FedEx	24