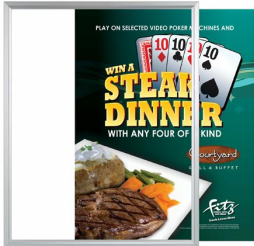


Extra Large 40x60 Frame | Beveled Slide-in Poster Frame Sign Holder

FOR CURRENT PRICING, VISIT THE ID # LISTED ABOVE
FREE SHIPPING



Product Details

- Extra Large 40 x 60 Frame
- Beveled Metal Slide-In Frame
- Wall Sign Holder and Poster Frame
- Accepts 40x60 poster and sign sizes
- Quick-Change Frame 40x60
- Easy Slide-In Sign Frame Design
- Your Choice of Top or Side loading poster changes
- Beveled Metal Frame Profile: **7/8" Wide**
- Narrow frame design has 5/8" overall off-the-wall depth
- **Slot Opening:** 1/4" (max insert thickness)
- Frame size is slightly larger than the 40x60 poster inserts
- Viewable Area: Moulding overlaps poster insert by 5/16" all around
- 2 Aluminum Frame Finishes: Black or Anodized Satin Silver
- Extra Large Frames can Mount either Portrait or Landscape
- Installs Easily: Punched holes in frame for easy surface mounting
- Wall Mount, hardware screws are included
- XL Top Load display frames 40 x 60 **for INDOOR or OUTDOOR use**
- Call for Custom Size Quick Change Poster Display and Sign Frames

**Make sure you laminate your insert material if going outdoors
**Top Load Sign Frames are weather resistant. Not water-proof

Ships Unassembled

- ALL frame sizes are cut to size, and prepped for easy assembly
- Takes minutes to assemble, Corner Key and Mounting Hardware Included
- Optional Backing Board is rolled up and placed into box for shipping cost savings
- Optional Clear Overlay is rolled up and placed into box for shipping cost savings

- ALL frame rail sizes 70" and larger will be **CUT in HALF** and

provided with a Straight Joiner Key to connect the two frame rails together. This will create a seam in your frame rail

The main reason for creating the seam is to reduce shipping costs.
We will ship these straight & mitered frame rails via common carrier ground service.

- We will ship any Length up to 148" in **FULL LENGTH** via Freight Carrier.

Please call us for your oversized slide-in frame dimensions to provide frame & freight costs

For Detailed Instructions on How to Assemble click on the Instruction Sheet ICON up above.

Ordering Options

Frame Orientation: Portrait or Landscape ()

Backing Board (.040" thickness)

- Black styrene, provides rigidity to your poster (this is recommended if your poster is not mounted).
- Thin enough to roll up and ship with unassembled frame.

Clear Overlay (.020 Thickness)

- Strong lightweight PETG provides a clear viewing window
- Thin enough to roll up and ship with unassembled frame.

IF YOU WANT A THICKER, MORE RIGID ACRYLIC, WE OFFER (3) OPTIONS LISTED BELOW...

.040 CLEAR ACRYLIC

.080 NON-GLARE ACRYLIC

.060 BREAK RESISTANT ACRYLIC

**THESE FRAMES WOULD SHIP FULLY ASSEMBLED.
FOR ACRYLIC PRICING AND SHIPPING COSTS,
PLEASE CALL US at**

Customize Your Sign Frame

- **Call to customize Extra Large 40 x 60 Poster Snap Frames!**
- If you request a Large Frame to be FULLY ASSEMBLED,

please call for a shipping quote.

- Call us to quote out frames sizes up to 144" x 144" (12 FEET x 12 FEET)

FRAME DETAILS for SHIPPING UNASSEMBLED

- **FREE GROUND SHIPPING!**
- Approximately 5 minutes to assemble

***BOTH THE BACKER BOARD AND CLEAR OVERLAY
ARE THIN ENOUGH TO ROLL UP AND
SHIP IN A THIN BOX ALONG WITH THE FRAME.**

***WHEN FRAMES ARE SHIPPED UNASSEMBLED, WE RECOMMEND A
SLIGHTLY **THICKER (MOUNTED) POSTER INSERT 1/8 - 3/16"**. THIS
ADDED THICKNESS WILL HELP SUPPORT THE POSTER IN THE FRAME.**

| Model | Insert Size | Overall Size | Viewable Area | Ships Via | Shipping Weight |
|-------------|-------------|-------------------|-------------------|-----------|-----------------|
| TLBSXL-4060 | 40" x 60" | 41 1/8" x 61 1/8" | 39 1/2" x 59 1/2" | FedEx | 24 |