

12x36 Poster Snap Open Frames (1 3/4" Security-Style) for MOUNTED GRAPHICS

FOR CURRENT PRICING, VISIT THE ID # LISTED ABOVE
FREE SHIPPING



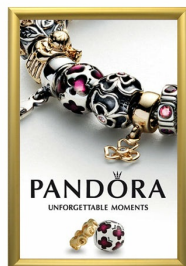
SECURITY TOOL PROVIDED



PLACE PALLET TOOL THROUGH EDGE OF SNAPFRAME



LIFT TO SNAP OPEN



Product Details

- 1 3/4" Security Snap Poster Display Frame with Pallet Tool
Fits **12 x 36 Posters**
- Quick-Changing, all 4 frame rails snap-open for easy poster changes
- Front Loading Frame for posters and other signage
- Snap Frame Profile: **1 3/4" Wide**
- Narrow profile offers 3/4" overall off the wall depth
- **Accepts 3 Printed Thicknesses: 1/8" | 3/16" | 1/4"**
- Viewable Area: Moulding overlaps poster insert by 13/16" all around
- (3) Aluminum snap frame finishes available
- .040 Backing Board: Thin, durable backer board provides rigidity for your poster
- .020 clear PETG overlay is included to protect your poster insert
- **Security Tool Included!** Ideal for high traffic, public environments.
- SwingSnap poster frames can mount either **Portrait or Landscape**
- Installs Easily: Punched holes in frame allow for easy surface mounting
- Hanging hardware is included

Aluminum snap-open displays are for **INDOOR** or ****OUTDOOR** use

****Make sure you laminate your insert material if going outdoors**

****Poster Snap Frames are weather resistant...not water-proof**

Mounted Graphic Details

1/8" Mounted Graphic Insert

All frames will include a .040 Black Backer Board

All frames will include a .020 Clear Overlay

3/16" Mounted Graphic Insert

All frames will include a .040 Black Backer Board

All frames will include a .020 Clear Overlay

1/4" MAX Mounted Graphic Insert

.040 Black Backer Board **NOT INCLUDED** (can not fit)

.020 Clear Overlay **NOT INCLUDED** (can not fit)

Model	Insert Size	Overall Size	Viewable Area	Ships Via	Shipping Weight	How is Frame Shipped?
SSTR134MT-1236	12" x 36"	13 3/4" x 37 3/4"	10 3/8" x 34 3/8"	UPS	15	Assembled
