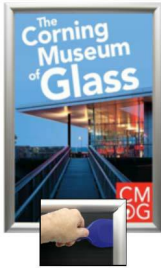


### EXTRA DEEP Poster Snap Frames 24x36 | Security Profile 1 3/4" Wide for Mounted Graphics on 3/8" and 1/2" Thick Boards

FOR CURRENT PRICING, VISIT THE ID # LISTED ABOVE  
FREE SHIPPING



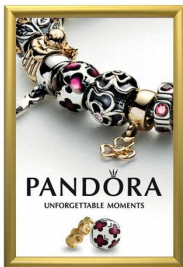
SECURITY TOOL PROVIDED



PLACE PALLET TOOL THROUGH EDGE OF SNAPFRAME



LIFT TO SNAP OPEN



#### Product Details

- 1 3/4" Wide Security Snap Frame 24 x 36
- Poster Snap Frame with Snap Open Pallet Tool
- Quick-Changing, all 4 frame rails snap-open
- Accepts 2 Mounted Graphics 3/8" and 1/2" Thick Boards
- Front Loading Frame for 24 x 36 posters and other signage
- Snap Frame Profile: 1 3/4" Wide
- Narrow profile offers 1" overall off the wall depth
- Viewable Area: Moulding overlaps poster insert by 13/16" all around
- (2) Aluminum snap frame finishes available
- 1/2" Silver bottom frame rail is exposed from side view for all frame

#### colors selected

- .040 Backing Board: Thin backer board provides rigidity for your 3/8" thick poster
- .020 clear PETG overlay is included to protect your 3/8" thick poster insert
- **Security Pallet Tool Included!** Ideal for high traffic, public environments.
- SwingSnap poster frames can mount either **Portrait or Landscape**
- Installs Easily: Punched holes in frame allow for easy surface mounting
- Hanging hardware included

- Aluminum snap-open displays are for **INDOOR** or **\*\*OUTDOOR** use

**\*\*Make sure you laminate your insert material if going outdoors**

**\*\*Poster Snap Frames are weather resistant...not water-proof**

#### Mounted Graphic Details

##### 3/8" Mounted Graphic Insert

All frames will include a .040 Black Backer Board

All frames will include a .020 Clear Overlay

##### 1/2" MAX Mounted Graphic Insert

.040 Black Backer Board **NOT INCLUDED** (can not fit)

.020 Clear Overlay **NOT INCLUDED** (can not fit)

Model	Insert Size	Overall Size	Viewable Area	Ships Via	Shipping Weight	How is Frame Shipped?
SSTR134MT-DEEP-2436	24" x 36"	25 3/4" x 37 3/4"	22 3/8" x 34 3/8"	UPS	12	Unassembled