

### 13x19 Poster Snap Open Frames (1 3/4" Security-Style) for MOUNTED GRAPHICS

FOR CURRENT PRICING, VISIT THE ID # LISTED ABOVE  
FREE SHIPPING

#### Product Details

- 1 3/4" Security Snap Poster Display Frame with Pallet Tool  
Fits **13 x 19 Posters**
- Quick-Changing, all 4 frame rails snap-open for easy poster changes
- Front Loading Frame for posters and other signage
- Snap Frame Profile: **1 3/4" Wide**
- Narrow profile offers 3/4" overall off the wall depth
- **Accepts 3 Printed Thicknesses: 1/8" | 3/16" | 1/4"**
- Viewable Area: Moulding overlaps poster insert by 13/16" all around
- (3) Aluminum snap frame finishes available
- .040 Backing Board: Thin, durable backer board provides rigidity for your poster
- .020 clear PETG overlay is included to protect your poster insert
- **Security Tool Included!** Ideal for high traffic, public environments.
- SwingSnap poster frames can mount either **Portrait or Landscape**
- Installs Easily: Punched holes in frame allow for easy surface mounting
- Hanging hardware is included

Aluminum snap-open displays are for **INDOOR** or **\*\*OUTDOOR** use  
\*\*Make sure you laminate your insert material if going outdoors  
\*\*Poster Snap Frames are weather resistant...not water-proof

#### Mounted Graphic Details

##### 1/8" Mounted Graphic Insert

All frames will include a .040 Black Backer Board

All frames will include a .020 Clear Overlay

##### 3/16" Mounted Graphic Insert

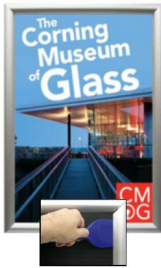
All frames will include a .040 Black Backer Board

All frames will include a .020 Clear Overlay

##### 1/4" MAX Mounted Graphic Insert

.040 Black Backer Board **NOT INCLUDED** (can not fit)

.020 Clear Overlay **NOT INCLUDED** (can not fit)



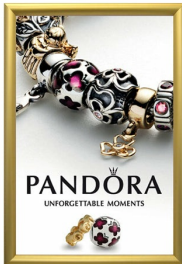
SECURITY TOOL PROVIDED



PLACE PALLET TOOL THROUGH  
EDGE OF SNAPFRAME



LIFT TO SNAP OPEN



| Model          | Insert Size | Overall Size      | Viewable Area     | Ships Via | Shipping Weight | How is Frame Shipped? |
|----------------|-------------|-------------------|-------------------|-----------|-----------------|-----------------------|
| SSTR134MT-1319 | 13" x 19"   | 14 3/4" x 20 3/4" | 11 3/8" x 17 3/8" | UPS       | 9               | Assembled             |

