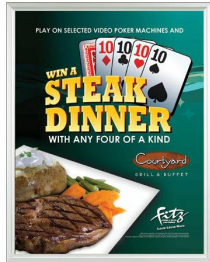


Large 36x36 Frame, Beveled Slide-in Beveled Metal Poster Frame - Black & Satin Silver Finishes

FOR CURRENT PRICING, VISIT THE ID # LISTED ABOVE
FREE SHIPPING



Product Details

- Budget-Friendly Large 36 x 36 Frame
- Wall Slide-In Sign Holder & Poster Frame
- Accepts 36x36 Poster and Graphic Sizes
- Quick-Change Metal Frame
- Your Choice of Top or Side loading poster changes
- Beveled Metal Frame Profile: **7/8" Wide**
- Narrow frame design has 5/8" overall off-the-wall depth
- **Slot Opening:** 1/4" (max insert thickness)
- Frame size is slightly larger than the 36 x 36 poster inserts
- Viewable Area: Moulding overlaps poster insert by 5/16" all around
- (2) Aluminum frame Finishes: Satin Silver and Black
- Frames wall mount Portrait or Landscape
- Installs Easily: Punched holes in frame for easy surface mounting
- Hanging hardware screws included
- Top Load display frames 36 x 36 **for Indoor or Outdoor use**
- Call for Custom Size Top/Side load Slide-In Poster Displays

****Be sure to laminate your insert material if going outdoors**
****Top Load Sign Frames are weather resistant. Not waterproof**

Ships Unassembled

- ALL frame sizes are cut to size, and prepped for easy assembly
- Takes minutes to assemble, Corner Key and Mounting Hardware Included
- Optional Backing Board is rolled up and placed into box for shipping cost savings
- Optional Clear Overlay is rolled up and placed into box for shipping cost savings

- ALL frame rail sizes 90" and larger will be **CUT in HALF** and

provided with a Straight Joiner Key to connect the two frame rails together. This will create a seam in your frame rail

The main reason for creating the seam is to reduce shipping costs.
We will ship these straight & mitered frame rails via common carrier ground service.

- We will ship any Length up to 148" in **FULL LENGTH** via Freight Carrier.

Please call us for your oversized slide-in frame dimensions to provide frame & freight costs

For Detailed Instructions on How to Assemble click on the Instruction Sheet ICON up above.

Ordering Options

- Backing Board (.040" thickness)**
- Black styrene, provides rigidity to your poster (this is recommended if your poster is not mounted).
 - Thin enough to roll up and ship with unassembled frame.

- Clear Overlay (.020 Thickness)**
- Strong lightweight PETG provides a clear viewing window
 - Thin enough to roll up and ship with unassembled frame.

IF YOU WANT A THICKER, MORE RIGID ACRYLIC, WE OFFER (3) OPTIONS LISTED BELOW...

.040 CLEAR ACRYLIC

.080 NON-GLARE ACRYLIC

.060 BREAK RESISTANT ACRYLIC

**THESE FRAMES WOULD SHIP FULLY ASSEMBLED.
FOR ACRYLIC PRICING AND SHIPPING COSTS,
PLEASE CALL US at**

Customize Your Sign Frame

- **Call to customize Extra Large 36 x 36 Poster Frames!**
- If you request a Large Frame to be FULLY ASSEMBLED,

please call for a shipping quote.

- Call us to quote out frames sizes up to 144" x 144" (12 FEET x 12 FEET)
- **FRAME DETAILS for SHIPPING UNASSEMBLED**
 - **FREE GROUND SHIPPING!**
 - Approximately 5 minutes to assemble

***BOTH THE BACKER BOARD AND CLEAR OVERLAY
ARE THIN ENOUGH TO ROLL UP AND
SHIP IN A THIN BOX ALONG WITH THE FRAME.**

***WHEN FRAMES ARE SHIPPED UNASSEMBLED, WE RECOMMEND A
SLIGHTLY **THICKER (MOUNTED) POSTER INSERT 1/8 - 3/16"**. THIS
ADDED THICKNESS WILL HELP SUPPORT THE POSTER IN THE FRAME.**

Model	Insert Size	Overall Size	Viewable Area	Ships Via	Shipping Weight
TLBSXL-3636	36" x 36"	37 1/8" x 37 1/8"	35 1/2" x 35 1/2"	FedEx	16