

SwingSnaps 16x16 Poster Snap Open Frames (1 1/4" Security-Style)

FOR CURRENT PRICING, VISIT THE ID # LISTED ABOVE
FREE SHIPPING

Product Details

- 16x16 Snap Poster Frame with Security Tool
- Fits 16x16 Posters
- Quick-Changing, all 4 frame rails snap-open for easy poster changes
- Front Loading Frame for 16x16 posters and other signage
- Aluminum Snap Frame Profile: 1 1/4" Wide
- Narrow profile offers 11/16" overall off the wall depth
- Accepts printed material up to 1/16" thick
- Viewable Area: Moulding overlaps poster insert by 3/8" all around
- (3) Aluminum snap frame finishes available
- .040 Backing Board: Thin, durable backer board provides rigidity for your poster
- .020 clear PETG overlay is included to protect your poster insert
- **Security Tool included!** Ideal for high traffic, public environments.
- SwingSnap poster frames can mount either **Portrait or Landscape**
- Installs Easily: Punched holes in frame allow for easy surface mounting
- Hanging hardware is included

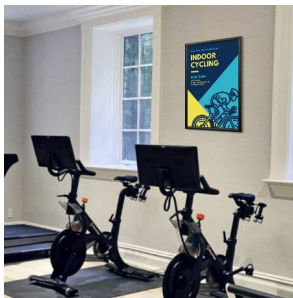
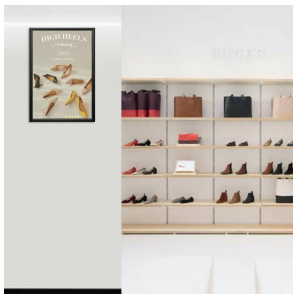
- Aluminum snap-open displays are for ****INDOOR** or ****OUTDOOR** use

****Make sure you laminate your insert material if going outdoors**

****Poster Snap Frames are weather resistant...not water-proof**

Customize your Snap Frames

- **Call to customize these Security SwingSnap Poster Snap Frames 16x16!**



Model	Insert Size	Overall Size	Viewable Area	Ships Via	Shipping Wt	How is Frame Shipped?
SSTR-1616	16" x 16"	17 3/4" x 17 3/4"	15 1/4" x 15 1/4"	UPS	7	Assembled