

Wood 16x16 Poster Snap Frame SwingSnaps (1 1/4" Wood Profile)

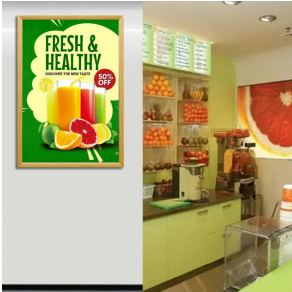
FOR CURRENT PRICING, VISIT THE ID # LISTED ABOVE
FREE SHIPPING

Product Details

- 16x16 Quick-Changing, all 4 frame rails snap-open for easy poster changes
- Fits 16x16 Posters
- Front Loading Frame for 16x16 posters and other signage
- Snap Frame Profile: 1 1/4" Wide
- Narrow profile offers 11/16" overall off the wall depth
- Accepts printed material up to 1/16" thick
- Viewable Area: Moulding overlaps poster insert by 3/8" all around
- (3) Wood Simulated Snap Frame Finishes Available
- .040 Backing Board: Thin, durable backer board provides rigidity for your poster
- .020 clear PETG overlay is included to protect your poster insert
- No Tools! All four frame sides snap-open easily by hand
- SwingSnap poster frames can mount either **Portrait or Landscape**
- Installs Easily: Punched holes in frame allow for easy surface mounting
- Hanging hardware is included

Customize your Snap Frames

- Call to customize Mitered Wood SwingSnap Poster Snap Frames!



Model	Insert Size	Overall Size	Viewable Area	Ships Via	Shipping Wt	How is Frame Shipped?
SSMCWOOD-1616	16" x 16"	17 3/4" x 17 3/4"	15 1/4" x 15 1/4"	UPS	6	Assembled