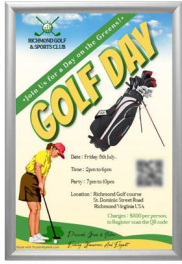


### SwingSnaps 10x20 Poster Snap Open Frames (1 3/4" Security-Style)

FOR CURRENT PRICING, VISIT THE ID # LISTED ABOVE  
FREE SHIPPING



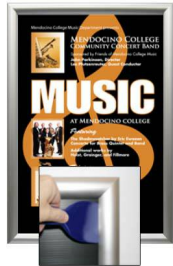
#### Product Details

- 10x20 Quick-Changing, all 4 frame rails snap-open for easy poster changes
- Front Loading Frame for 10x20 posters and other signage
- Snap Frame Profile: 1 3/4" Wide
- Narrow profile offers 3/4" overall off the wall depth
- Accepts printed material up to 1/16" thick
- Viewable Area: Moulding overlaps poster insert by 13/16" all around
- (3) Aluminum snap frame finishes available
- .040 Backing Board: Thin, durable backer board provides rigidity for your poster
- .020 clear PETG overlay is included to protect your poster insert
- **Security Tool Included!** Ideal for high traffic, public environments.
- SwingSnap poster frames can mount either **Portrait or Landscape**
- Installs Easily: Punched holes in frame allow for easy surface mounting
- Hanging hardware is included

- Aluminum snap-open displays are for **INDOOR** or **\*\*OUTDOOR** use

\*\*Make sure you laminate your insert material if going outdoors

\*\*Poster Snap Frames are weather resistant...not water-proof



#### Customize your Snap Frames

- **Call to customize these Wide Security SwingSnap Snap Frames!**
- If you request a larger size Snap Frame FULLY ASSEMBLED,

please call for a shipping quote.

SECURITY TOOL PROVIDED



PLACE PALLET TOOL THROUGH EDGE OF SNAPFRAME



LIFT TO SNAP OPEN

Model	Insert Size	Overall Size	Viewable Area	Ships Via	Shipping Wt	How is Frame Shipped?
SSTR134-1020	10" x 20"	11 3/4" x 21 3/4"	8 3/8" x 18 3/8"	UPS	6	Assembled