

Wood 20x20 Poster Snap Frame SwingSnaps (1 1/4" Wood Profile)

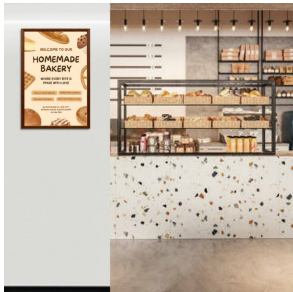
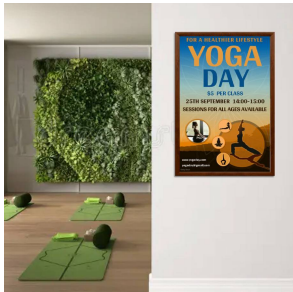
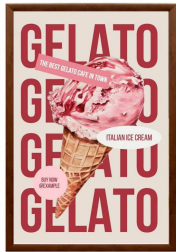
FOR CURRENT PRICING, VISIT THE ID # LISTED ABOVE
FREE SHIPPING

Product Details

- 20x20 Quick-Changing, all 4 frame rails snap-open for easy poster changes
- Fits 20x20 Posters
- Front Loading Frame for 20x20 posters and other signage
- Snap Frame Profile: 1 1/4" Wide
- Narrow profile offers 11/16" overall off the wall depth
- Accepts printed material up to 1/16" thick
- Viewable Area: Moulding overlaps poster insert by 3/8" all around
- (3) Wood Simulated Snap Frame Finishes Available
- .040 Backing Board: Thin, durable backer board provides rigidity for your poster
- .020 clear PETG overlay is included to protect your poster insert
- No Tools! All four frame sides snap-open easily by hand
- SwingSnap poster frames can mount either **Portrait or Landscape**
- Installs Easily: Punched holes in frame allow for easy surface mounting
- Hanging hardware is included

Customize your Snap Frames

- [Call to customize Mitered Wood SwingSnap Poster Snap Frames!](#)



Model	Insert Size	Overall Size	Viewable Area	Ships Via	Shipping Wt	How is Frame Shipped?
SSMCWOOD-2020	20" x 20"	21 3/4" x 21 3/4"	19 1/4" x 19 1/4"	UPS	7	Assembled