

SwingSnap 36x36 Poster Snap Frame Locking with Security Screws

FOR CURRENT PRICING, VISIT THE ID # LISTED ABOVE
FREE SHIPPING

Product Details

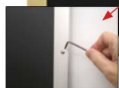
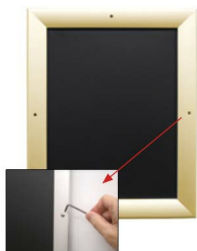
***ALL 4 FRAME SIDES HAVE A SECURITY SCREW PLACED INTO THE CENTER OF EACH FRAME RAIL. THESE SCREWS SECURE THE SAFETY OF YOUR POSTING AND PREVENT ANY TAMPERING.**

- 36x36 Quick-Changing, all 4 frame rails snap-open for easy poster changes
- Fits 36 x 36 Posters
- Front Loading Frame for 36x36 posters and other signage
- Snap Frame Profile: 1 1/4" Wide
- Narrow profile offers 11/16" overall off the wall depth
- Accepts printed material up to 1/16" thick
- Viewable Area: Moulding overlaps poster insert by 3/8" all around
- (9) Aluminum snap frame finishes available
- .040 Backing Board: Thin, durable backer board provides rigidity for your poster
- .020 clear PETG overlay is included to protect your poster insert
- Allen Wrench Tool is included to help remove and secure your inserts.
- SwingSnap poster frames can mount either Portrait or Landscape
- Installs Easily: Punched holes in frame allow for easy surface mounting
- Hanging hardware is included

- Aluminum snap-open displays are for **INDOOR** or ****OUTDOOR** use

****Make sure you laminate your insert material if going outdoors**

****Poster Snap Frames are weather resistant...not water-proof**



Customize your Snap Frames

- [Call to customize Security Screw Poster Snap Frames!](#)



| Model | Insert Size | Overall Size | Viewable Area | Ships Via | Shipping Wt | How is Frame Shipped? |
|-------------|-------------|-------------------|-------------------|-----------|-------------|-----------------------|
| SSMCSS-3636 | 36" x 36" | 37 3/4" x 37 3/4" | 35 1/4" x 35 1/4" | UPS | 15 | Unassembled |