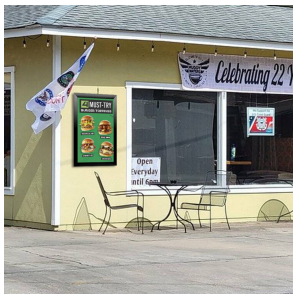
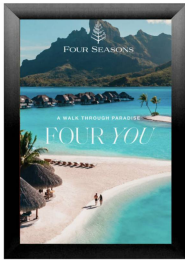


Extra Large 48x96 Poster Snap Frame with Bold 2 1/2" Wide Edge Metal Profile. Snap Open, Quick Change

FOR CURRENT PRICING, VISIT THE ID # LISTED ABOVE
FREE SHIPPING



Product Details

- 48x96 Extra Large Poster Snap Frame
- Bold, Wide-Edge Metal Profile 2 1/2 Inches Wide
- Holds 48x96 Posters and Other Signage
- Quick-Changing, all 4 frame rails snap-open
- Front Loading Frame for 48x96 posters and other signage
- Aluminum Snap Frame Profile: 2 1/2" Wide
- Narrow profile has an 11/16" off-the-wall depth
- Accepts printed material up to **1/16" thick**
- Viewable Area: Moulding overlaps poster insert by 1/2" all around
- Three Aluminum Snap Frame Finishes
- **Optional:** Cherry wood simulated snap frame finish (faux wood)
- .040 Backing Board: durable board provides rigidity for your thin poster
- .020 clear PETG overlay included to protect your poster insert
- **No Tools!** All four frame sides snap open easily by hand
- SwingSnap poster frame 48 x 96 mount Portrait or Landscape
- Installs Easily: Punched holes in the frame for easy surface mounting
- Hanging hardware included

Wide Edge Large Snap Frame 48x96 Ships UNASSEMBLED

- Aluminum snap-open displays are for Indoor and **Outdoor use

****Be sure to laminate your insert material if going outdoors**
****Poster Snap Frames are weather resistant, not waterproof**

Ships Unassembled

- ALL snap frame sizes are cut to size, and prepped for easy assembly
- Takes minutes to assemble, Corner Key and Mounting Hardware Included
- Backing Board is rolled up and placed into box for shipping cost savings
- Clear Overlay is rolled up and placed into box for shipping cost savings

-
- ALL snap frame rail sizes 85" and larger will be **CUT in HALF**, and

provided with a Straight Joiner Key to connect the two snap frame rails together.

This will create a seam in your snap frame rail where 2 or more pieces on one side of your frame will flip open.

The main reason for creating the seam is to reduce shipping costs. We will ship these chopped snap frame rails via common carrier ground service.

- We will ship any Length up to 144" in **FULL LENGTH** via Freight Carrier.

Please call us for your oversized snap frame dimensions to provide frame & freight costs

.....

For Detailed Instructions on How to Assemble click on the Instruction Sheet ICON up above.

Ceiling Mount Options

- **Common Applications:** Displaying "suspended" advertisements or menu's in front of windows or behind a counter or cash wrap is a great way to grab someone's attention and drive traffic and sales to your place of business.

- We offer the option of installing "D" Rings onto the Snap Frame.

This allows you the option of suspending your frame from the ceiling.

Both the short side and long side will have "D" Rings installed, giving you the option to hang and display your snap frame in Portrait or Landscape orientation.

- You have the choice of silver chain links in 2 FEET, 4 FEET or 6 FEET Lengths.

Custom color chains and lengths are available upon request.

****NOTE:** these products are **SINGLE SIDED** displays. If you require double sided displays to show two separate advertisements, then please Contact Us to quote out your size and specifications.

****Due to the variety of ceiling surfaces, we advise you to purchase the appropriate hooks at your local hardware store. We DO NOT include or offer the Ceiling Hooks that the Chains will attach to.**

Custom Sizes & Shipping Options Available

- Call to customize **Extra Large 2 1/2" Wide Poster Snap Frames 48 x 96**
- If you request a Snap Frame to be FULLY ASSEMBLED,

please call for a shipping quote.

- Call us to quote out snap frames sizes up to 144" x 144" (12 FEET x 12 FEET)

Model	Insert Size	Overall Size	Viewable Area	Ships Via	Shipping Wt	How is Frame Shipped?
SSWEXL-4896	48" x 96"	52" x 64"100	47" x 95"	UPS	38	Unassembled