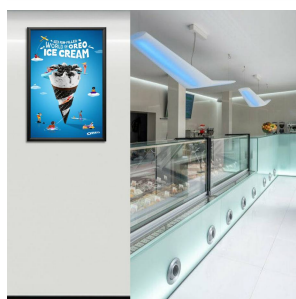


Security-Style 27x40 Poster Snap Frame with 1 1/4" Wide Aluminum Frame Includes Pallet Tool

FOR CURRENT PRICING, VISIT THE ID # LISTED ABOVE
FREE SHIPPING

Product Details



- 27x40 Snap Poster Frame with Security Tool
 - Quick Change for 27x40 Poster and Sign Sizes
 - All 4 Frame Rails Snap-Open with Pallet Tool
 - Front Loading Frame for Graphic Materials
 - Aluminum Snap Frame Profile: 1 1/4" Wide
 - Narrow profile: 11/16" Overall Off-the-Wall Depth
 - Pallet Tool Lifts Tight Spring-Loaded Frame Rails
 - Accepts Printed Material up to **1/16" thick**
 - Viewable Area: Moulding overlaps poster insert by 3/8" all around
 - Three Aluminum Snap Frame Finishes
 - .040 Backing Board: Thin Board Provides Rigidity Thin Poster Sheets
 - .020 Clear PETG Overlay Included to Protect Poster Insert
 - **Security Tool Included!** To Spring Open Super Tight Frame Rails
 - SwingSnap Poster Snap Frames Mount **Portrait or Landscape**
 - Installs Easily: Punched Holes in Frame for Easy Surface Mounting
 - Wall Hanging Hardware Included
 - Aluminum Snap-Open Frame for ****Indoor or **Outdoor** use
- ****Be sure to laminate your insert material if going outdoors**
****Poster Snap Frames are weather resistant, not water-proof**

Customize your Snap Frames

- [Contact Us for Custom Security SwingSnap Poster Snap Frames](#)

Model	Insert Size	Overall Size	Viewable Area	Ships Via	Shipping Wt	How is Frame Shipped?
SSTR-2740	27" x 40"	26 3/4" x 41 3/4"	26 1/4" x 39 1/4"	UPS	15	Unassembled