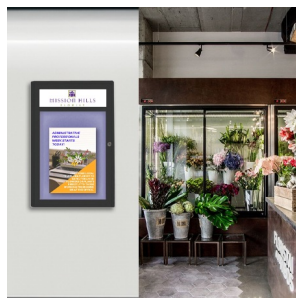


### Extra Large Indoor Enclosed Bulletin Board Swing Cases 36 x 84 with Header and Lights (Radius Edge)

FOR CURRENT PRICING, VISIT THE ID # LISTED ABOVE



#### Product Details

- 36" x 84" Sleek radius edge with lighted corners provided with mitered corners
- Features full length piano hinges (opens right to left)
- Security cam-lock is positioned on front of 36"x84" frame (2 keys included)
- **LED Strip Lights: Long-Lasting & Energy-Efficient**
- Overall Depth: 4"
- Interior Useable Depth: 2 5/8"
- Extra deep for displaying bulkier items
- 4 frame finishes
- Break Resistant Acrylic: Perfect for high traffic or public environments
- Self healing natural cork interior
- Case must be surface mounted on the wall
- **Call to customize these Extra Large Indoor Bulletin Board Cases!**

#### Header Details

- UPPERCASE Helvetica vinyl lettering
- **Black lettering on a 5" white header (3" max text height)**

#### IMPORTANT HEADER ORDERING DETAILS

Please type your message in the text box when making your selections, and we will try to keep your message on one line unless otherwise specified. If we can't fit your message on one line we will center your copy on two lines. For the customer that needs a specific font, color or text positioning, you may call customer service with your requests.

#### ORDERING OPTIONS BELOW.

#### SELECT THE RIGHT OPTION FOR YOU, AND FOLLOW INSTRUCTIONS

##### STANDARD HEADER (No Charge)

Standard UPPERCASE Black Helvetica Lettering as detailed above. Make sure to spell out your header in the empty Header Text field when making your selections. Check your grammar & spelling!

##### LEAVE HEADER BLANK (No Charge)

For customers that will be adding their own header, select this option. Make sure to select **LEAVE HEADER BLANK** in the Header Style dropdown when making your selections.

##### CUSTOM HEADER / LOGO (Upcharge)

For customers that wish to send us a specific FONT, COLOR, or LOGO. Make sure to select **CUSTOM LOGO** in the Header Style dropdown when making your selections. We will contact you once the order has been received to instruct you on how to submit the HI-Res EPS File to us.

#### Lighting Information

- LED strip lights are positioned on top to shine down
- Electric Cord: 3-wire center back exit (electrician needed for hardwiring)

#### Ordering Options

- Vinyl covering over cork
- Frame Orientation: Portrait or Landscape
- **Door Window: Break Resistant or Tempered Glass**
  - Break Resistant Acrylic: 1/8" thick, lightweight (Standard)
  - 1/4" Tempered Glass for public environments and locations that require this added safety feature. (Upcharge)
    - If chosen we will use our heavy duty door that will change one of 2 dimensions by 1/2". We will contact you if you do not indicate which dimension you would like adjusted in your order notes.
    - The viewable area can decrease by 1/2" or the overall size can be increased by 1/2".

#### Landscape Orientation Information

\*For outdoor poster cases being built for landscape orientation, the following information below will apply.

- The hinge placement will always be on Top (**Door Swings Upward**)
- Prop arms will be added to the unit to support and hold the door.
- The prop arms will extend the door open at approximately 45 degrees.

Model	Interior Size (Portrait)	Interior Size (Landscape)	Overall Size	Viewable Area (Portrait)	Viewable Area (Landscape)	Ships Via	Shipping Weight
-------	--------------------------	---------------------------	--------------	--------------------------	---------------------------	-----------	-----------------

SCBBXLIRHL- 3684	31 1/8" x 79 3/4"	79 1/4" x 25"	36" x 84" x 3 1/8"	29 7/8" x 71 1/2"	78" x 23 1/4"	Freight	63
---------------------	-------------------	---------------	-----------------------	-------------------	---------------	---------	----