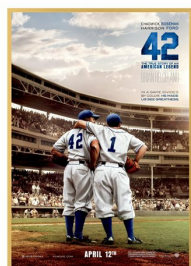


Movie Poster Frame 16x24 with Classic Metal Poster Picture Frames

FOR CURRENT PRICING, VISIT THE ID # LISTED ABOVE



Product Details

- Movie Poster Picture Frame 16x24
- Elegant, Metal Aluminum Frame Style
- Square Metal Frame Profile: 7/16" Wide
- Poster Frame Depth: 1 5/16"
- Wall Mount Poster Display Frame
- Holds 16x24 Poster, Sign, Photography, Other Graphics,
- Frame Orientation Wall Mounts Portrait or Landscape
- (5) Aluminum frame finishes
- Viewable Area: Frame Moulding overlaps your insert (poster) by 3/8"
- Buy this frame empty or with a backer board and acrylic window
- Metal Picture Frame ships UNASSEMBLED.
- Assembles Easily: Wall Mounting Hardware Included
- 16x24 Metal Movie Picture Frames are for **INDOOR USE ONLY!**
- Call For Custom Poster Frame Display Sizes and Styles

Backing Board Options

The backing board is used for placing your typical thin sheet poster, photo or artwork onto, to keep your graphic rigid. The various options, with benefits are below. If you choose **NO BACKER BOARD**, and plan on using the frame without installing your own backer, **we strongly recommend that your thin printed sheet be mounted on any type of rigid board**. Placing a thin poster into a frame without a backer board is not ideal.

Economy Corrugated Cardboard Backer

- This brown cardboard backer is an ideal budget conscious option

Foam Board (Foamcore) Backer

- Foam Board has a higher level of protection than corrugated cardboard
- White finish preserves the integrity of translucent photos well
- A perfect substrate for dry mounting objects to the backing

Acid-Free Foam Board (Archival)

- When preservation is the primary concern, this is the best option for protection
- Ideal choice for all frame sizes which are displaying items of personal or monetary value
- Examples: Vintage Family Photo's, Expensive Artwork, and Historic & Heirloom Documents

Acrylic Options

We use acrylic for our frame windows. It's half the weight of glass while providing the same clarity. If you choose **NO ACRYLIC**, and plan on using the frame without inserting your own acrylic or glass window, we strongly recommend your graphic be mounted onto a board to keep it rigid. Placing a thin poster into a frame without an acrylic is not ideal.

Economy Clear Acrylic

- Strong lightweight acrylic provides a clear viewing window.
- This is an ideal economical choice for small to mid size frames

Premium Clear Acrylic

- This is a thicker more durable acrylic option than the Economy Acrylic
- Ideal choice for mid size frames to large format frames
- Strong lightweight acrylic provides a clear viewing window

Non-Glare Acrylic

- This is an ideal choice for all frame sizes which are near windows or under direct overhead lighting

Break Resistant Acrylic:

- This high impact acrylic, perfect for high traffic or public environments

UV Protective (Ultra-Violet) Archival Acrylic

- Protects against fading, yellowing, and loss of value
- Ideal choice for all frame sizes which are displaying items of personal or monetary value
- Examples: Vintage Family Photo's, Expensive Artwork, and Historic & Heirloom Documents

| Model | Insert Size | Overall Size | Viewable Area | Ships Via | Shipping Weight |
|----------|-------------|-------------------|-------------------|-----------|-----------------|
| MPF-1624 | 16" x 24" | 16 1/8" x 24 1/8" | 14 7/8" x 22 7/8" | FedEx | 4 |